

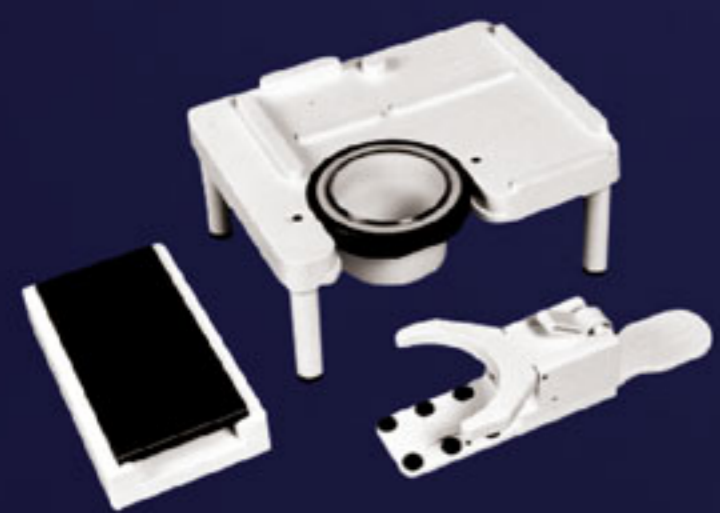


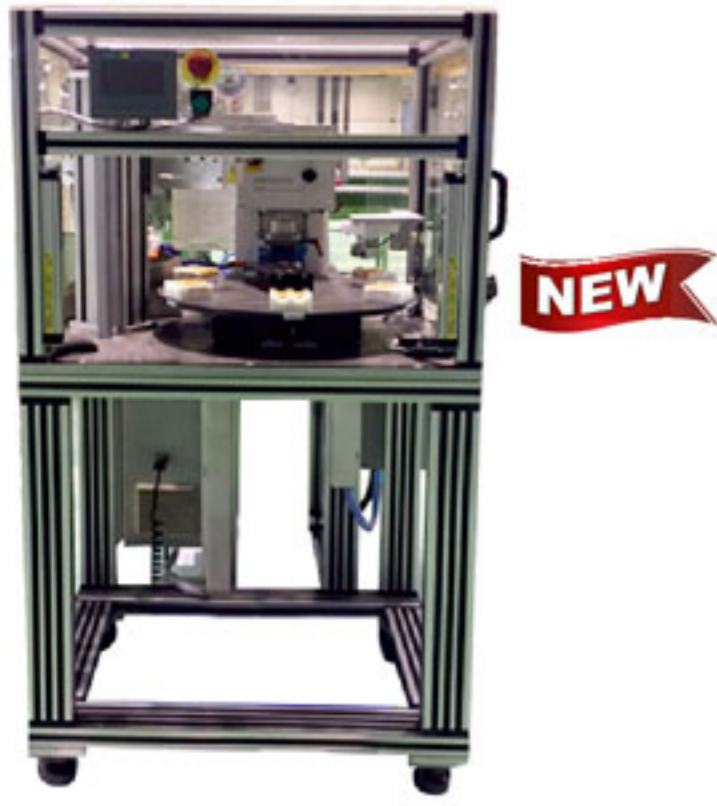
New

Electromechanical / Electropneumatic Pad Printing Machines

SEALED INK CUP 60 / 90 / 130 / 150 / 60E / 90E / 130E

FROM THE INVENTOR OF TAMPON PRINTING MACHINE





Option of SIC Series

Compact 2/4/6/8/12/14/16/20 station indexing Table with auto ejection & flexi air shower

- Multi Station rotary indexing tables can be quickly set up for multi/single color printing on parts.
- Modular design enables it to combine with almost any Tampoprint Pad Printing machine.
- Offers high precision with smooth operation.
- Zero adjustment.
- Quick change fixtures.
- Continuous production.



Automation

- To Print Longer Parts.
- Low inks consumption.



SIC - 130 For Rotary Printing

- Electronic rotary indexer for indexing 2/4/6/8/.....18 positions on the same system. This whole system can be angled.



Two Color Shuttle Machines

- The smaller products are station being highly accurate positioning of moving pads for multi color or multi position printing.

Pad Expanding Device

- The shuttle is synchronized for adding an additional pad for printing bigger parts by expanding as per required applications.



Infinite Automations

- We customize automations for printing on toggles, MCB's, closures, pens etc.



- Fast job changeover assembly as standard accessory.

- Pneumatic, compact & environmental friendly technology
Logos & Artwork shown, are property of respective companies

Optional Accessories with SIC Series

Smart IR Conveyor



- Advanced solution for IR curing of parts for application like Paints Curing, Ink Drying, Pre Heating.
- Fast & controlled heat.
- Process stability & temperature uniformity.
- Sensors to check the availability of parts.
- Only 30% power consumed on idle mode, which saves energy.
- Special lamp life upto 5000 hours.
- Special Printing Options for Rotary Bottle.



Preciteel® Cliches Plate / Sure® Tampon Pad

- Preciteel® Steel cliches / plates give more mileage in comparison to plastic, polymer or aluminium cliches/plates. These plates/cliches are extra hard, rust resistant, extremely smooth & with exact depth because these plates are laser etched using state of the art laser marking technology from Markolaser
- Eco Steel plates are excellent thick plates for date code & small product applications.
- Sure® Silicone Pads / Tampons transfer the precise, sharp & high resolution images from the cliché to surface to be printed. We provide wide range of shapes on demand. Sure padsl. Sure transfer 2. Sure brightness 3. Sure speed 4. Sure long life.



Cross X - Y Table

- Cross X - Y table facilitates precise component positioning can be used in all SIC series Pad Printing machines Cross & transversal carriages can be adjusted by means of manual wheel with adjustable Zero point.



Machine Stand

- Profile based stand reduces the foot print of machine & provide an elegant appearance.



Monothinner Metering Pump for Sealed Systems

- Peristaltic pump delivers thinner into inks at very constant speed



Automatic Tape Cleaning

- Automatic Ink residue pick up system with cycle counter.



- Technology from world's best tampographic company.



- Excellent even for automations



TECHNICAL DATA

S.No. Technical Features	Sealed Ink Cup 60	Sealed Ink Cup 90	Sealed Ink Cup 130	Sealed Ink Cup 60 E	Sealed Ink Cup 90 E	Sealed Ink Cup 130E
1. Parts no.	01 00 00/*01	01 00 02/*03	01 00 81*	01 03 62/*65	01 03 63/*66	01 03 64 /*67
2. Ink residue pick - up system	No	No	No	Yes / Optional	Yes / Optional	Yes / Optional
3. Single cycle	Yes	Yes	Yes	Yes	Yes	Yes
4. Multiple printing double / triple	Optional	Optional	Optional	Yes	Yes	Yes
5. Continuous run	Yes	Yes	Yes	Yes	Yes	Yes
6. Cycle counter	No	No	No	Yes	Yes	Yes
7. Variable speed control	Yes	Yes	Yes	Yes	Yes	Yes
8. Cycles/hour (max.)	Upto 1,800	Upto 1,500	Upto 1,200	Upto 1,500	Upto 1,500	Upto 1,250
9. Ink cup/doctoring cup (ømm)	60	90	130	60	90	130
10. Variable doctoring contact pressure	No	No	No	No	No	No
11. Cliche size (mm)	70 x 140	100x 215	150 x 300	70 x 140	100x 215	150 x 300
12. Print image size max. (ømm)	55	85	125	55	85	125
13. Variable Tampon stroke onto workpiece (mm)	20-80	35-100	25-120	15-80	30-100	25-120
14. Variable Tampon stroke onto cliche (mm)	20-50	30-70	35-80	15-50	30-50	25-80
15. Tampon installation height max. (mm)	66	100	120	60	95	115
16. Force of pressure (N)	450	750	1,800	450	750	1,800
17. Drive	pneumatic	pneumatic	pneumatic	electropneumatic	electropneumatic	electropneumatic
18. Connected load (kW)				0.2	0.2	0.2
19. Power supply (V/phase)				230V/1/N/PE	230V/1/N/PE	230V/1/N/PE
20. Interface				D-SUB 37-pole	D-SUB 37-pole	D-SUB 37-pole
21. Power frequency (Hz)				50-60	50-60	50-60
22. Control	pneumatic sequential control	pneumatic sequential control	pneumatic sequential control	PLC	PLC	PLC
23. Control voltage (V/DC)				24	24	24
24. Prefuse (A)				16	16	16
25. Pneumatic supply fine filter 40µm	6		6	6	6	6
26. Air consumption/cycle (NL)	1.3	2.7	6	2	2.7	6
27. Width (mm)	602/*610	792/*835	*1,100	342	372/300*	436/350*
28. Depth (mm)	270/*342	300/*372	*442	665	810	1.042
29. Height (mm)	482	672	850	480/390*	640/510*	794 /650*
30. Weight (approx. kg)	38	75	130	42/38*	76/68*	134/120*

For Enquiries Contact :
Spinks India

Infoline:+91-9210626626

Gurgaon : Plot No. 88 Pace City-1, Sector-37, Gurgaon (Haryana)-122001 (India)
Tel.: +91-124-4770500, Mob.: +91-8130337776
Email : info@taglessprinting.com, info@spinksworld.com

Delhi : 19, Rani Jhansi Road, Motia Khan, New Delhi-110055 (India)
Tel.: +91-11-45786800, Mob.: +91-9810682331,
Email: p.deo@spinksworld.com

Mumbai : B-342, Oshiwara Indl. Centre, Opp. Oshiwara Bus Depot,
Off. New Link Road, Goregaon(W), Mumbai 400104 (India)
Tel.: +91-22-32507885, Mob.: +91-8655000120, 9324213581,
Email : salesmumbai@spinksworld.com

Chennai : 160, SIDCO Industrial Estate, Thirumazhisai, Chennai, Tamil Nadu (India), Pin- 602105
Phone- +91-44 -26811007, Telefax- +91-44-26811077
Email: saleschennai1@spinksworld.com, jha@spinksworld.com

Pune : Gate no.-37, Mauje Chimbali, Taluka Khed, Pune, Maharashtra (India), Pin- 410501
Mob: +91-9975090374,
Email: ag@spinksworld.com

Tirupur: The Zenith Apartments, No - 257 / 89, Radha Krishnan Street Neelakadu 2nd Street, Rakkiapalyam Road
Ammapalayam, Tirupur, (India), Pin- 641603, Tel: +91-44-26811007, Mob.: +91-9566110588, 9901989848
Email: saleschennai@spinksworld.com, dinesh@spinksworld.com, jha@spinksworld.com

